

DXY110-T100S-9

Dual Axis AO Deflector

Visible Wavelengths



2121

The DXY110-T100S provides high speed simultaneous 2D laser beam scanning at visible wavelengths. It is fabricated from two orthogonally-mounted single axis TeO₂ deflectors which diffract the input laser beam to generate up to a 750 x 750 sequential spot matrix. The DXY110 may be operated in raster (linear), random access and vector scanning modes from the same RF drive electronics. The Isomet deflector-driver combination is designed to maintain the Bragg relationship over the specified RF frequency bandwidth. This results in a uniform diffracted beam intensity across the full XY scan angle range.

SPECIFICATIONS

	D110-	T100S-	T100S-	T100S-	T100S-
Wavelength (specify)**:		488nm	515nm	532nm	633nm
Centre Freq. (nominal)		100MHz	100MHz	100MHz	100MHz
RF Bandwidth Δf:		50MHz	50MHz	50MHz	50MHz
Scan Angle/axis:		2.3°	2.4°	2.5°	2.9°
Separation Angle :		4.5°	4.8°	4.9°	5.9°
Total RF driver power:	MAX average or CW drive power limit = 3W per axis				
Nominal, per axis		1.9W	2.0W	2.0W	2.7W
Aperture:		<u>Active Aperture:</u>		<u>Access Time:</u>	
D110-T100S-9		9.3mm(H) x 9.3mm(W)		15 μs	
Resolution N:	N = maximum number of resolvable spots (angles), beam width dependent				
D110-T100S-9	N=750x750, 9.3mm beam				

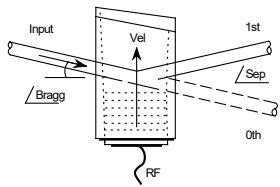
Input Laser Polarization: Linear. (Quarter wave plate included)
 Output Laser Polarization: Circular (Nominal)
 Interaction Material: TeO₂ (Slow Shear)
 Acoustic Velocity: 0.617mm/μs
 RF Input Impedance: 50Ω Nominal
 Insertion loss: < 8%
 Optical power: 10W CW full aperture.

* Theoretical Rayleigh resolution with a uniformly illuminated aperture.
 Incremental / non-resolvable spots are limited by the drive frequency resolution.

** Please specify with order. Call for other operating wavelengths.
 See model DXY110-T50S for NIR.
 See model DXY110-T120S for <488nm.

ALL SPECIFICATIONS SUBJECT TO CHANGE WITHOUT NOTICE
 ISOMET CORP, 10342 Battlevue Parkway, Manassas, VA 20109, USA.
 Tel: (703) 321 8301 Fax: (703) 321 8546
 E-mail: ISOMET@ISOMET.COM Web Page: WWW.ISOMET.COM

Quality Assured.
In-house: Crystal Growth,
Optical Polishing,
A/R coating, Vacuum Bonding



DXY110-T100S-9

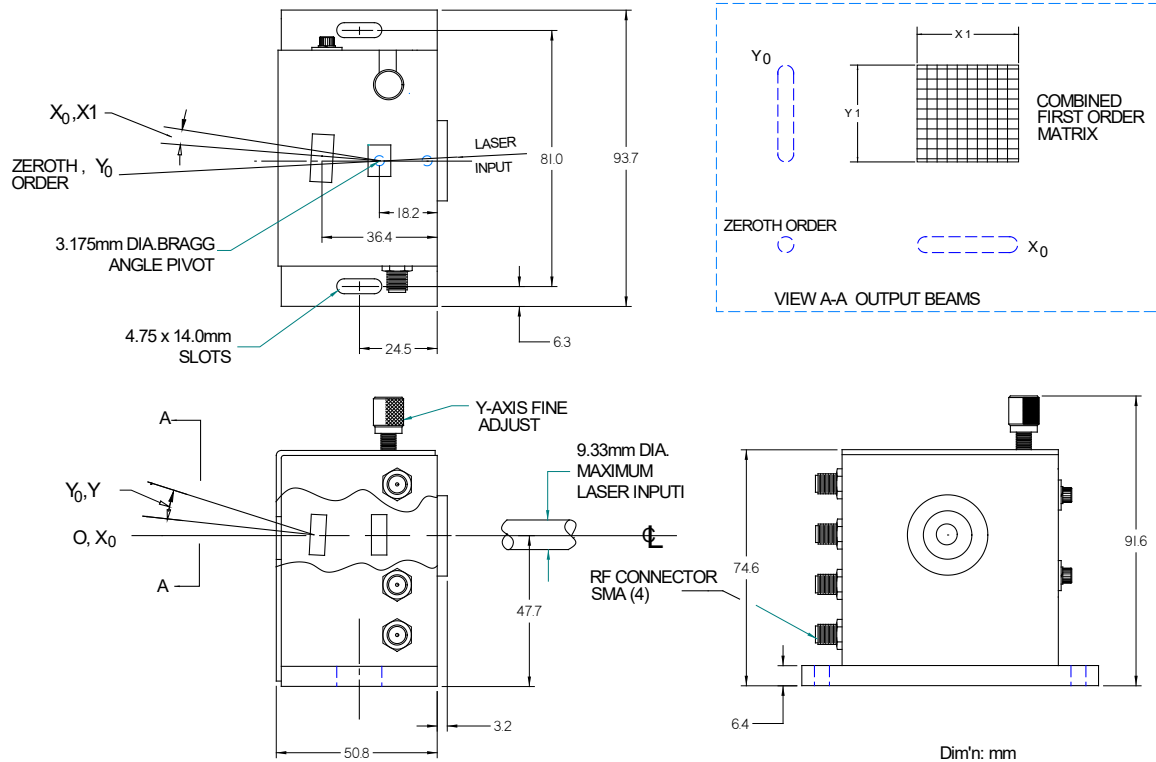
Dual Axis AO Deflector

Visible Wavelengths



2121

OUTLINE DRAWING



RF DRIVE ELECTRONICS

- 1 off IMS4-L (or -P) quad output synthesizer
- plus -
- 4 off AG0-100T-1-1 amplifiers

ALL SPECIFICATIONS SUBJECT TO CHANGE WITHOUT NOTICE
 ISOMET CORP, 10342 Battlevue Parkway, Manassas, VA 20109, USA.
 Tel: (703) 321 8301 Fax: (703) 321 8546
 E-mail: ISOMET@ISOMET.COM Web Page: WWW.ISOMET.COM

Quality Assured.
 In-house: Crystal Growth,
 Optical Polishing,
 A/R coating, Vacuum Bonding